



# Flexibore® 150 for Bore Water Pumping



# Flexibore® 150



**Flexibore 150 Coupling Set**  
(One set = one coupling and two clamps)



## FEATURES

- ✓ Deep bore water pumping up to 150 m
- ✓ Ultra-high tensile for large submersible pumps
- ✓ Flexible - easy to install and retrieve
- ✓ Dilates - no internal build-up
- ✓ Rigorously tested
- ✓ Secure couplings
- ✓ Australian Made

## Flexibore 150: The Ultimate Layflat Hose for Submersible Pumps

Flexibore 150 is a premium layflat hose designed to simplify bore water pumping by replacing rigid pipes with a flexible, high-performance alternative. Manufactured in Australia by **Crusader Hose**, this revolutionary hose is engineered for deep bore applications, supporting pump depths of up to **150 metres**.

### Superior Strength & Durability

Flexibore 150 is constructed using a **high-tensile polyester weave** and **hydrolysis-resistant polyurethane**, ensuring exceptional strength and reliability. The woven textile reinforcement provides **high burst pressure** while also bearing the full weight of the pump and water column, making it ideal for demanding submersible pump applications.

### Efficient & Cost-Effective

Unlike traditional rigid pipes, Flexibore 150 can **dilate by up to 15%**, reducing friction loss and significantly lowering pumping costs. Its dilation also prevents iron bacteria build-up, a common issue in poly pipe or fibreglass systems.

### Easy Installation & Secure Cable Management

The hose features a **coloured guide strip with loops** spaced every 1/2 metre or 1 metre depending on diameter, allowing for secure attachment of power cables. This design prevents cable abrasion against the bore casing, ensuring safe and efficient operation. Additionally, secure couplings can be easily attached on-site, simplifying setup and maintenance.

### Versatile & Reliable

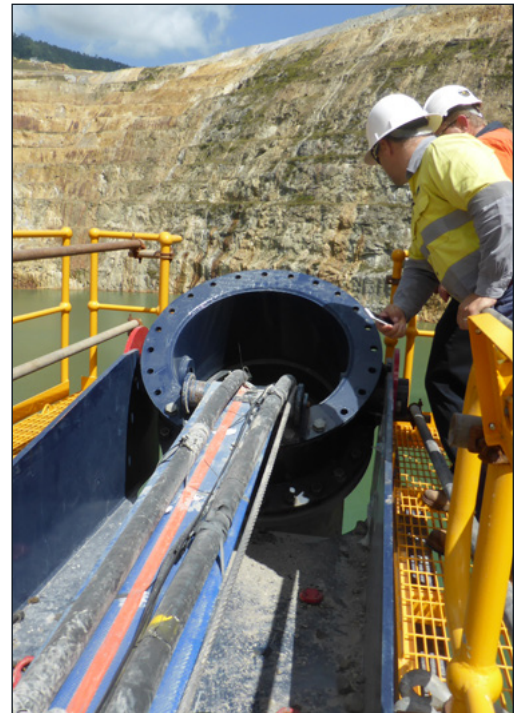
Flexibore 150 is available in **203 mm and 254 mm** diameters and **continuous lengths** up to 500 m, catering to various bore water pumping needs. Every roll undergoes rigorous factory testing before despatch, guaranteeing reliability in the field. Some minimum order quantities may apply.

For a **high-quality, easy-to-install, and cost-efficient** bore water pumping solution, choose **Flexibore 150** – engineered for performance, built to last.

## TECHNICAL DATA

Diameter (ID)	203 mm	254 mm
	8"	10"
Max. operating head	150 m	150 m
Min. burst pressure	4200 kPa	4200 kPa
Peak tensile load	22 t	20 t
Recommended max. tensile load	11 t	10 t
Weight of hose/m	3.4 kg	4.2 kg
Weight of hose with water/m at 10% dilation	39 kg	59.9 kg
Max. flow rate	148 L/s	200 L/s
Coupling OD	270 mm	320 mm
Weight of S/S coupling	41 kg	45 kg
Fitting bolt torque*	130 Nm	85 Nm
Part # Flexibore 150 hose	HFB203XUA	HFB254XUA
Part # Flexibore 150 coupling set	CLF203BDA	CLF254BDA
Part # coupling set fitted with brass break-off plug	CLF203BDJ	CLF254BDJ

\*Rocol nickel-based anti-seize or equivalent must be applied to the bolt thread.



## OTHER SPECS

Water pH	3 to 9
Max. operating temp	70 °C
Max. diametric dilation	15 %
Max. extension**	2 %
Safety factor	2:1

\*\*within recommended operating parameters.

**NOTE:** For operation beyond stated recommended operating limits, contact your Flexibore distributor.

Crusader Hose reserves the right to modify any specification as part of ongoing product development and without prior notice. Contact Crusader Hose to ensure that the most up-to-date information is used.





## Flexibore Accessories

**Crusader Hose** designs and manufactures a comprehensive range of accessories to streamline the installation and retrieval of **Flexibore** hose.

### FlexiStraps & Cable Ties - Secure Cable Management for Flexibore

FlexiStraps and cable ties provide reliable cable-securing solutions for use with Flexibore. FlexiStraps are particularly recommended for securing thicker power cables, ensuring stability and durability in demanding environments.



### Lifting Clamp

A crucial tool for the safe and efficient installation of your submersible pump. Crusader Hose provides a selection of **Lifting Clamps**, with load capacities ranging from **1.2 tonnes to 7 tonnes**, ensuring compatibility with your bore installation project.



### Installation Roller

Designed to simplify the installation and retrieval of submersible pumps using the **vehicle installation method**. Crusader Hose offers **Installation Rollers** rated for **5 tonnes and 10.5 tonnes**, providing durability and ease of use for your operations.



### Other Accessories

**Bore Cap**



**Break-Off Plug**



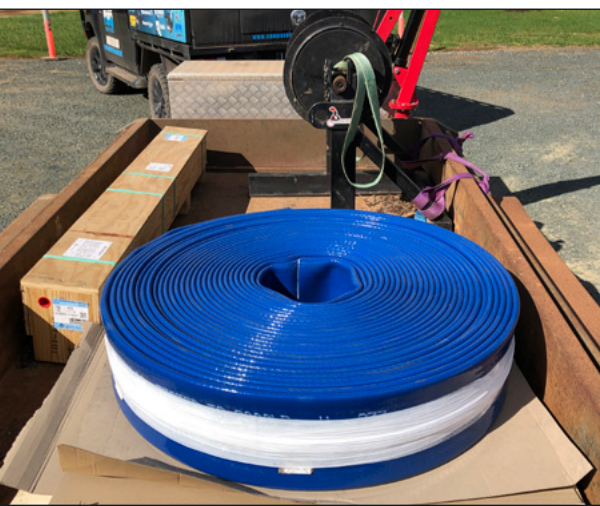
**Hose Joiner**



**Adaptors & Sockets**



**Torpedo**



Scan to read a Flexibore case study



# Flexibore® 150

## IDEAL FOR

- Bore water pumping - diameters of 203 mm & 254 mm
- Potable water use
- Easy installation
- Rapid retrieval
- Low-cost pumping



**A-frame & Reel** with bulk length of Flexibore hose



**Crusader Hose Pty Ltd**

22 Industry Place, Bayswater VIC 3153 Australia

e: [sales@crusaderhose.com.au](mailto:sales@crusaderhose.com.au) p: +61 3 9720 1100

[www.crusaderhose.com.au](http://www.crusaderhose.com.au)

2510

