



Flexibore[®] 400 for Bore Water Pumping



Flexibore® 400



Flexibore 400 Coupling Set
(One set = one coupling and two clamps)

FEATURES

- ✓ Ultra-deep bore water pumping up to 400 m
- ✓ Ultra-high pressure
- ✓ High tensile for very large submersible pumps
- ✓ Flexible - can be rolled up
- ✓ Dilates - no internal build-up
- ✓ Rigorously tested
- ✓ Secure couplings
- ✓ Australian Made

Flexibore 400: The Ultimate Layflat Hose for Submersible Pumps

Flexibore 400 is a premium layflat hose designed to simplify bore water pumping by replacing rigid pipes with a flexible, high-performance alternative. Manufactured in Australia by **Crusader Hose**, this revolutionary hose is engineered for deep bore applications, supporting pump depths of up to **400 metres**.

Superior Strength & Durability

Flexibore 400 is constructed using a **high-tensile polyester weave** and **hydrolysis-resistant polyurethane**, ensuring exceptional strength and reliability. The woven textile reinforcement provides **high burst pressure** while also bearing the full weight of the pump and water column, making it ideal for demanding submersible pump applications.

Efficient & Cost-Effective

Unlike traditional rigid pipes, Flexibore 400 can **dilate by up to 10%**, reducing friction loss and significantly lowering pumping costs. Its dilation also prevents iron bacteria build-up, a common issue in poly pipe or fibreglass systems.

Easy Installation & Secure Cable Management

The hose features a **coloured guide strip with loops** spaced every 1/2 metre or 1 metre depending on diameter, allowing for secure attachment of power cables. This design prevents cable abrasion against the bore casing, ensuring safe and efficient operation. Additionally, secure couplings can be easily attached on-site, simplifying setup and maintenance.

Versatile & Reliable

Flexibore 400 is available in a wide range of diameters (**76 mm to 152 mm**) and **continuous lengths** up to 500 m, catering to various bore water pumping needs. Every roll undergoes rigorous factory testing before despatch, guaranteeing reliability in the field. Some minimum order quantities may apply.

For a **high-quality, easy-to-install, and cost-efficient** bore water pumping solution, choose **Flexibore 400** – engineered for performance, built to last.

TECHNICAL DATA

Diameter (ID)	76 mm 3"	102 mm 4"	127 mm 5"	152 mm 6"
Max. operating head	400 m	400 m	400 m	400 m
Min. burst pressure	10000 kPa	10000 kPa	9000 kPa	8000 kPa
Peak tensile load	14 t	20 t	25 t	30 t
Recommended max. tensile load	7 t	10 t	12.5 t	15 t
Weight of hose/m	1.5 kg	2.3 kg	3 kg	3.6 kg
Weight of hose with water/m at 10% dilation	6.5 kg	11.3 kg	16.9 kg	23.6 kg
Max. flow rate	18 L/s	40 L/s	55 L/s	90 L/s
Coupling OD	120 mm	150 mm	180 mm	205 mm
Weight of S/S coupling	6 kg	8 kg	12 kg	14 kg
Fitting bolt torque*	30 Nm	30 Nm	30 Nm	55 Nm
Part # Flexibore 400 hose	HFD076XUA	HFD102XUA	HFD127XUA	HFD152XUA
Part # Flexibore 400 coupling set in 316 S/S**	CLF076DDE	CLF102DDE	CLF127DDE	CLF152DDE
Part # coupling set fitted with brass break-off plug	CLF076DDF	CLF102DDF	CLF127DDF	CLF152DDF

*Rocol nickel-based anti-seize or equivalent must be applied to the bolt thread.

**Coupling sets in Duplex 2205 & Super Duplex 2507 available on special order.

OTHER SPECS

Water pH	3 to 9
Max. operating temp	70 °C
Max. diametric dilation	10 %
Max. extension***	2 %
Safety factor	2:1

***within recommended operating parameters.

NOTE: For operation beyond stated recommended operating limits, contact your Flexibore distributor.

Crusader Hose reserves the right to modify any specification as part of ongoing product development and without prior notice. Contact Crusader Hose to ensure that the most up-to-date information is used.





Flexibore Accessories

Crusader Hose designs and manufactures a comprehensive range of accessories to streamline the installation and retrieval of **Flexibore** hose.

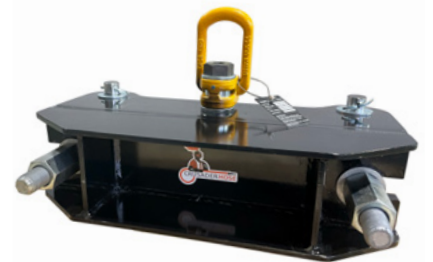
FlexiStraps & Cable Ties - Secure Cable Management for Flexibore

FlexiStraps and cable ties provide reliable cable-securing solutions for use with Flexibore. FlexiStraps are particularly recommended for securing thicker power cables, ensuring stability and durability in demanding environments.



Lifting Clamp

A crucial tool for the safe and efficient installation of your submersible pump. Crusader Hose provides a selection of **Lifting Clamps**, with load capacities ranging from **1.2 tonnes to 7 tonnes**, ensuring compatibility with your bore installation project.



Installation Roller

Designed to simplify the installation and retrieval of submersible pumps using the **vehicle installation method**. Crusader Hose offers **Installation Rollers** rated for **5 tonnes and 10.5 tonnes**, providing durability and ease of use for your operations.



Other Accessories

Bore Cap



Break-Off Plug



Hose Joiner



Adaptors & Sockets



Torpedo



Scan to read a Flexibore case study



Flexibore® 400

IDEAL FOR

- Deep bore water pumping - diameters of 76 mm to 152 mm
- Potable water use
- Easy installation
- Rapid retrieval
- Low-cost pumping



A-frame & Reel with bulk length of Flexibore hose



Crusader Hose Pty Ltd

22 Industry Place, Bayswater VIC 3153 Australia

e: sales@crusaderhose.com.au p: +61 3 9720 1100

www.crusaderhose.com.au

2510

